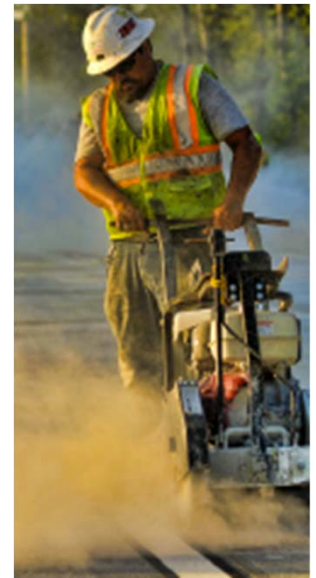




I-20 over Augusta Canal and Savannah River Design- Build Bridge Replacements and Roadway Widening

GA TIME Task Force Quarterly
Meeting

July 10, 2019



Agenda

- Design-Build Overview
- Project Overview
- Schedule
- Questions



**Information and schedule are subject to change.*

Design-Build Overview

Design-Build

- Combines preconstruction related services with construction services into **one contract**
- Allows the contractor to participate in the project's design in an effort to **reduce costs, improve communication, and expedite project delivery**

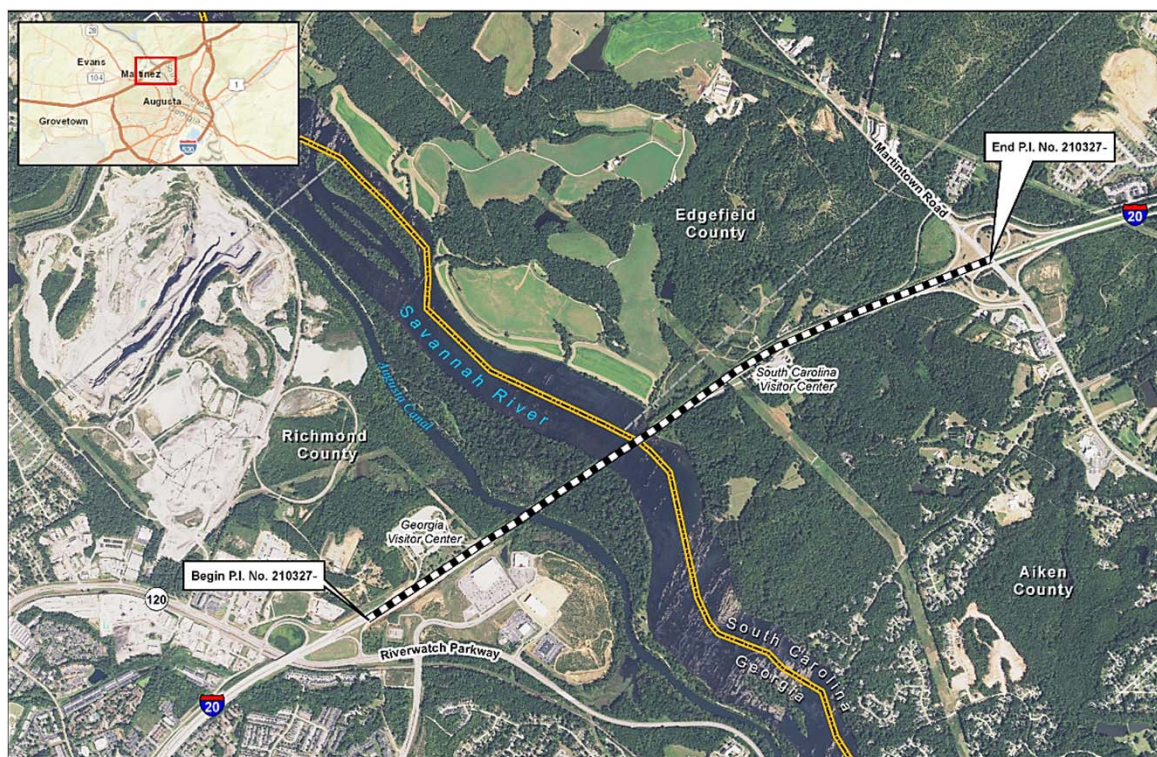
Governed by:

- 23 Code of Federal Regulations (CFR) Part 636
- Georgia Code Section 32-2-81 (*Enacted 2004*)
- Board Rules, Chapter 672-18 (*Adopted 2006 & 2013*)



**Information and schedule are subject to change.*

I-20 at Savannah River Project Location



**Information and schedule are subject to change.*

Project Overview

- Design-Build delivery (\$82 million)
- Contractor: Superior Construction Co. Designer: WSP
- Bi-State Agreement signed by Georgia and South Carolina in 2016
- Maintain existing traffic during construction
- No right-of-way (ROW) acquisition



**Information and schedule are subject to change.*

Proposed Improvements

- Replace functionally and structurally obsolete bridges on I-20 EB and WB over
 - ≈ Augusta Canal
 - ≈ Savannah River
- Provide future capacity along I-20:
 - Widen from 4 lanes to 6 lanes
 - 12-foot inside and outside paved shoulders
 - Limits extend from the Georgia Welcome Center in Richmond County, Georgia to Exit 1, W. Martintown Road in Aiken County, South Carolina
 - Total length is approximately 1.8 miles
- Signalize the intersection at Exit 1
 - New signal at I-20 EB off-ramp and W. Martintown Road
 - Turn lane improvements



**Information and schedule are subject to change.*

Existing vs. Proposed Bridges

	Augusta Canal Bridges		Savannah River Bridges	
	Existing	Proposed	Existing	Proposed
Year Constructed	1964	-	1965	-
Bridge Length	410'	384'	1216'	1278'
Number of Lanes (each direction)	2	3	2	3
Lane Width	12'	12'	12'	12'
Shoulder Width (inside & outside)	2'	12'	2'	12'

**Information and schedule are subject to change.*

Proposed Renderings



**Information and schedule are subject to change.*

Environmental

- Cultural Resources
 - Augusta Canal and Industrial District National Historic Landmark
 - Archaeological resources
- Recreational Area
 - Augusta Canal National Heritage Area
 - Tow Path (limited closures)
 - Recreational use of Canal (limited closure)



**Information and schedule are subject to change.*

Anticipated Schedule

- Design and Environmental – Ongoing
- Begin Construction – Q4 2019
 - West Martintown Road – Q4 2019
 - Bridges and Georgia Roadway Widening – Q4 2019
 - South Carolina Roadway Widening – Q1 2020
- Off-peak lane closures anticipated
- Construction Complete – Q1 2022
 - West Martintown Rd Intersection Complete – Q4 2020

**Information and schedule are subject to change.*

Questions?

Albert S. Welch, Jr., P.E. (Butch)
Georgia Department of Transportation
P3 Project Manager
awelch@dot.ga.gov
404.772.6969

GDOT Design-Build Webpage

<http://www.dot.ga.gov/PS/Innovative/DesignBuild>

**Information and schedule are subject to change.*